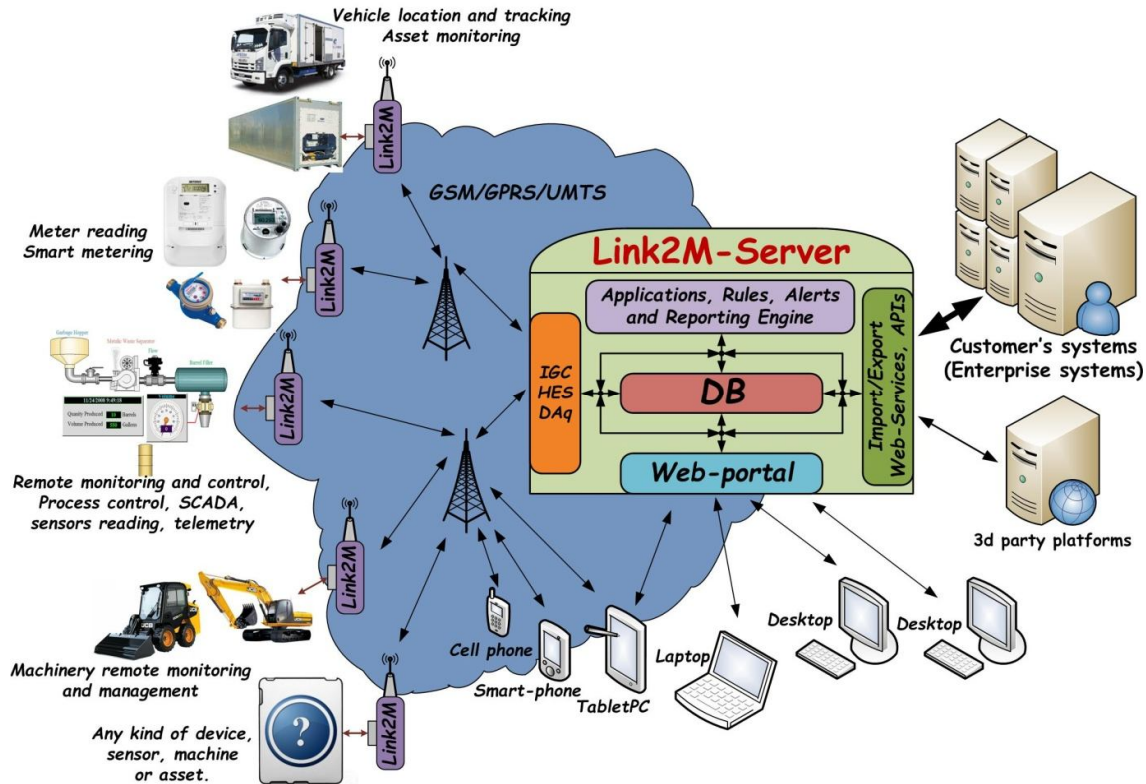




**Link2M** (Link-To-Machine) is a universal **Cloud-based M2M/telemetry/IoT** platform for end-to-end connectivity, networking and integration between machines, sensors or devices and management systems.



**Usage examples of Link2M platform:**

- **Meter reading** - for **AMR/AMI**, smart metering, data concentrators for Electricity, Gas and Water metering.
- **SCADA** - for smart grid, electricity, gas, water and last-mile solutions.
- **Fuel/Petrol Control and Monitoring Solutions** - real time monitoring of petrol level in the tank of the generator, theft and tampering detection and alarming.
- **Electric Generator** real time monitoring and control and petrol value tracking.
- **Remote control and monitoring solutions** - data loggers, weather stations, cold chain or reefer temp control (on trucks, on vessels and etc), smart home, remote industrial controller, home alarm systems.
- **Weather/Metrologic stations** - monitor temperature, pressure and other conditions of the weather.
- **Intelligent Street-Lighting** – remote control of street lighting and reduce energy cost.
- **Control/Server Room Monitoring** - remote monitoring of temperature, pressure and automatic alarms via SMS or email.
- **Internet-Of-Things (IoT)** - **connecting everything to the Cloud** and controls via Cloud (Cloud-based highly automated smart electronic solutions).
- **Cars/trucks tracking and positioning** - **AVL** (automatic vehicle tracking), vehicle monitoring, vehicle remote control, car alarm systems.
- **Emergency and Early Warning Systems** like Earthquake, Flooding or any HLS warning systems.
- **Vending machines** - real time analyze and monitoring of each machine content and optimal plan of items refill, forecast, billing.
- **Agriculture automation** – control and monitoring of water supply (auto-irrigation systems, monitoring of field conditions).
- **Remote gate/parking/access control** – automatic gate open/close via phone call or SMS.



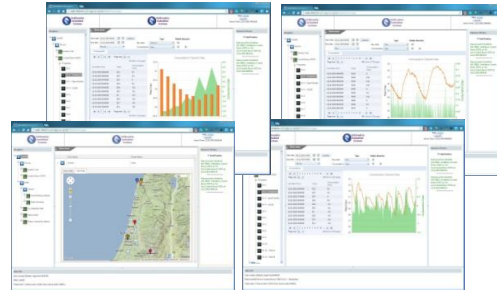
- **Equipment Theft Prevention/Protection** – real time auto-monitoring of equipment (AC units, heat pumps, transformers and its) for unauthorized movement or motion for 24x7x365. Alerting via SMS or emails. Reports.
- And many others.

**Link2M platform** ([www.Link2M.com](http://www.Link2M.com)) consists of 2 main parts:

- **Link2M-Web** – Cloud-based Internet Server.
- **Link2M-U** – stand alone device for remote communication and control.

Web-Server (**Link2M-Web**) is an Interactive dynamic Cloud Web-server with next main features:

- **Accessible from anywhere** via standard Internet Browser (**Google Chrome, Internet Explorer, Firefox, Opera, Safari**) of devices with any OS (**Windows, Linux, Android, iOS**).
- **Secured data exchange with Link2M-U** and compatible devices over UDP, TCP and HTTP.
- Represent actual and historical data in **table, graph, GIS (map/Google-MAP) or dashboard views**.
- Send **alerts via email, SMS**, Web pop-up window.
- Asset or fleet **monitoring and tracking**.
- **Multi-language interface**.
- **Scalable**.
- Reach **Export/Import** via API and Web-Services.
- **Flexible in customization and modification**.
- **Easy integration** with other solutions.



#### Features of Link2M-U:

- **Power Input:** 9-30 VDC, ready for in-vehicle installation.
- **Cellular modem** for wireless data transmission: **2G (GPRS), 3G (UMTS) or 4G (LTE)**.
- **Low-range RF** for local wireless communication: **WiFi, 2.4GHz ZigBee/6LoWPAN, Sub-1GHz RF**.
- **GNSS** (integrated with support of **GPS+GLONASS+Galileo+QZSS**) - for accurate positioning around the Globe.
- **3G Accelerometer** - to measure acceleration/shock in 3 dimensions.
- **2x Digital Inputs** - for pulse counting, sensing of digital statuses and etc.
- **2x Digital Outputs** (relay, for DC or AC) - for control device.
- **2x Analog Inputs** (0..10V or 4..20mA) - for sensing of analog values or sensors (for example, temperature, pressure).
- **Internal RTC with backup battery** - for the non-stop accurate time counting.
- **RS232** - for local communication with devices as point-to-point (include MODBUS).
- **RS485** - for local communication with devices as point-to-point or point-to-multi (include MODBUS).
- **CANbus** – for industrial CAN or in-vehicle OBD-2 communication.
- **4 LEDs** - for indication of device statuses.
- **1MB..4MB internal data Flash Memory** for Data storage.
- **SD-card slot** - for memory storage expansion (up to 32GB).
- **Ethernet 10/100Mb** - for LAN communication.
- **USB-device** – for data exchange and configuration from PC or laptop.
- **Expansion port (GPIOs, I2C, SPI, UART)** for easy expansion and integration with other devices or solutions.
- **A few internal sensors** - for control and monitoring of internal parameters and conditions.
- **"Transparent" modes** (tunneling) to accessing all interfaces of Link2M-U via **2G/3G/4G, Ethernet or WiFi over TCP/IP**.
- **Temperature range:** -40C..+85C.
- **Humidity:** <=95%.
- **Enclosure:** plastic or metal.